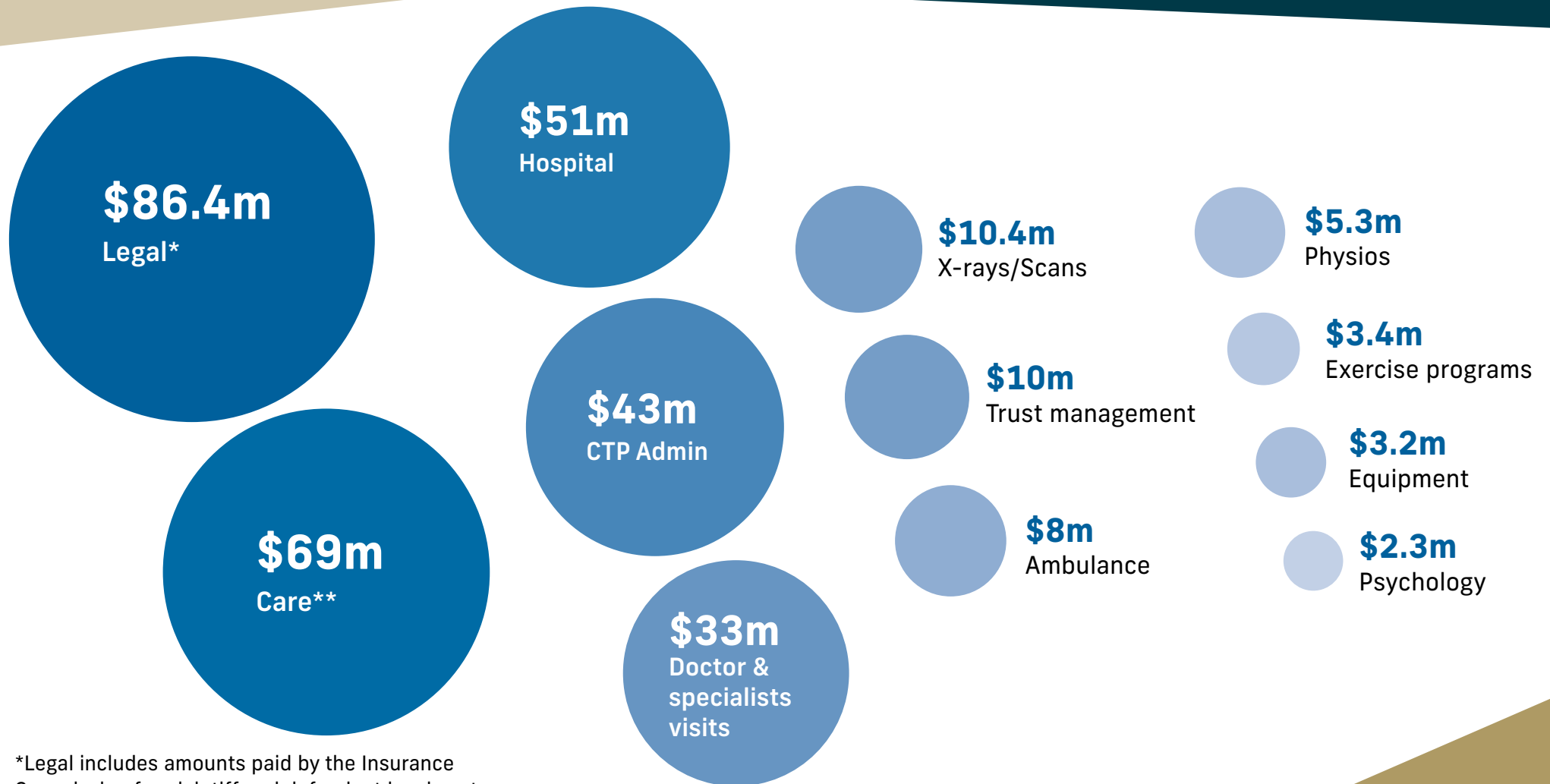


CTP Insurance Scheme

Major cost categories 2022-23



Insurance Commission
of Western Australia



*Legal includes amounts paid by the Insurance Commission for plaintiff and defendant legal costs, and reports commissioned by legal representatives.

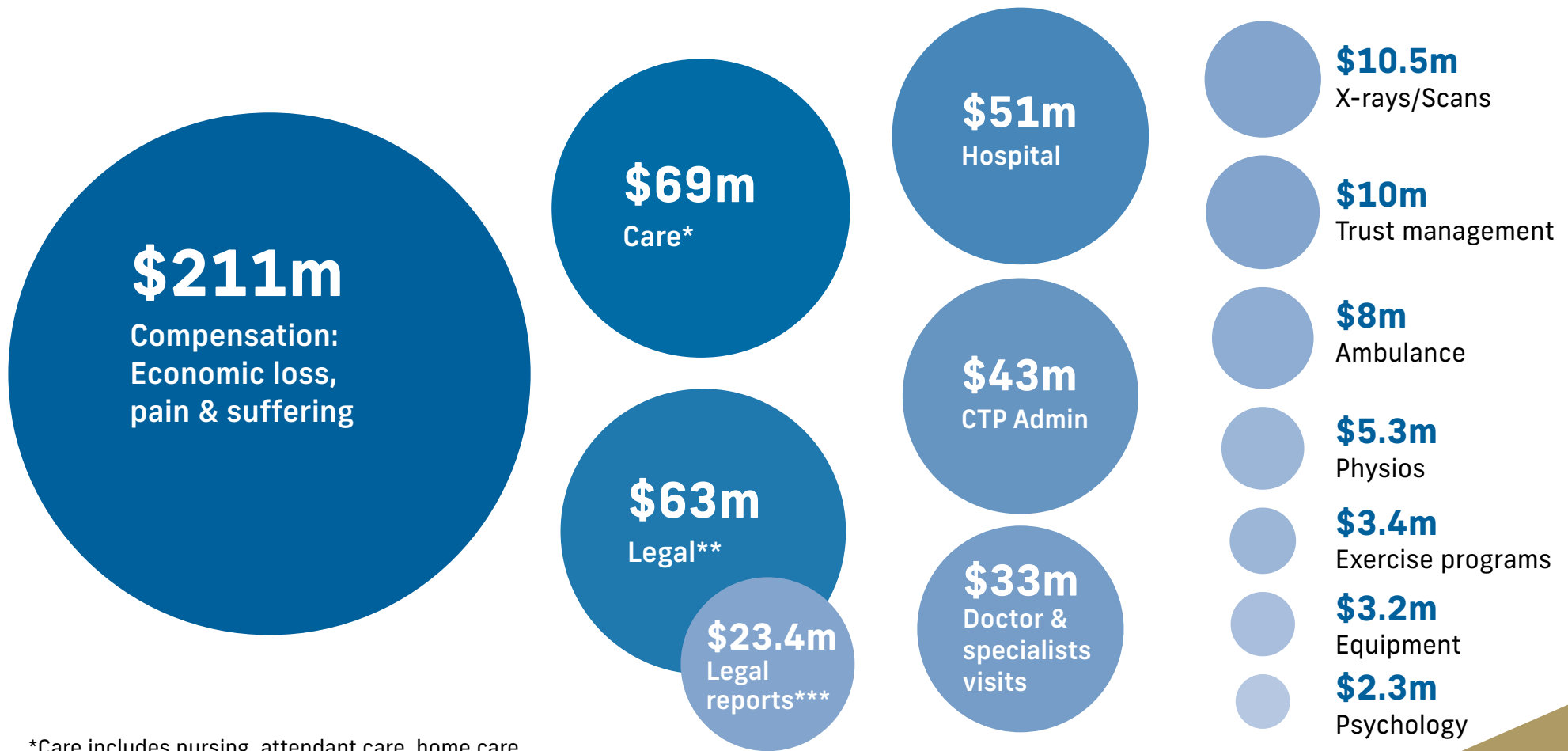
**Care includes nursing, attendant care, home care.

CTP Insurance Scheme

Major cost categories and compensation paid to claimants 2022-23.



Insurance Commission
of Western Australia



*Care includes nursing, attendant care, home care.

**Legal includes amounts paid by the Insurance Commission for plaintiff & defendant legal costs.

***Reports commissioned by legal representatives.